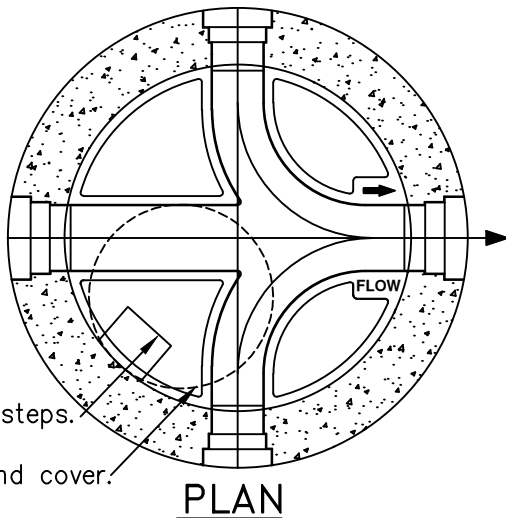
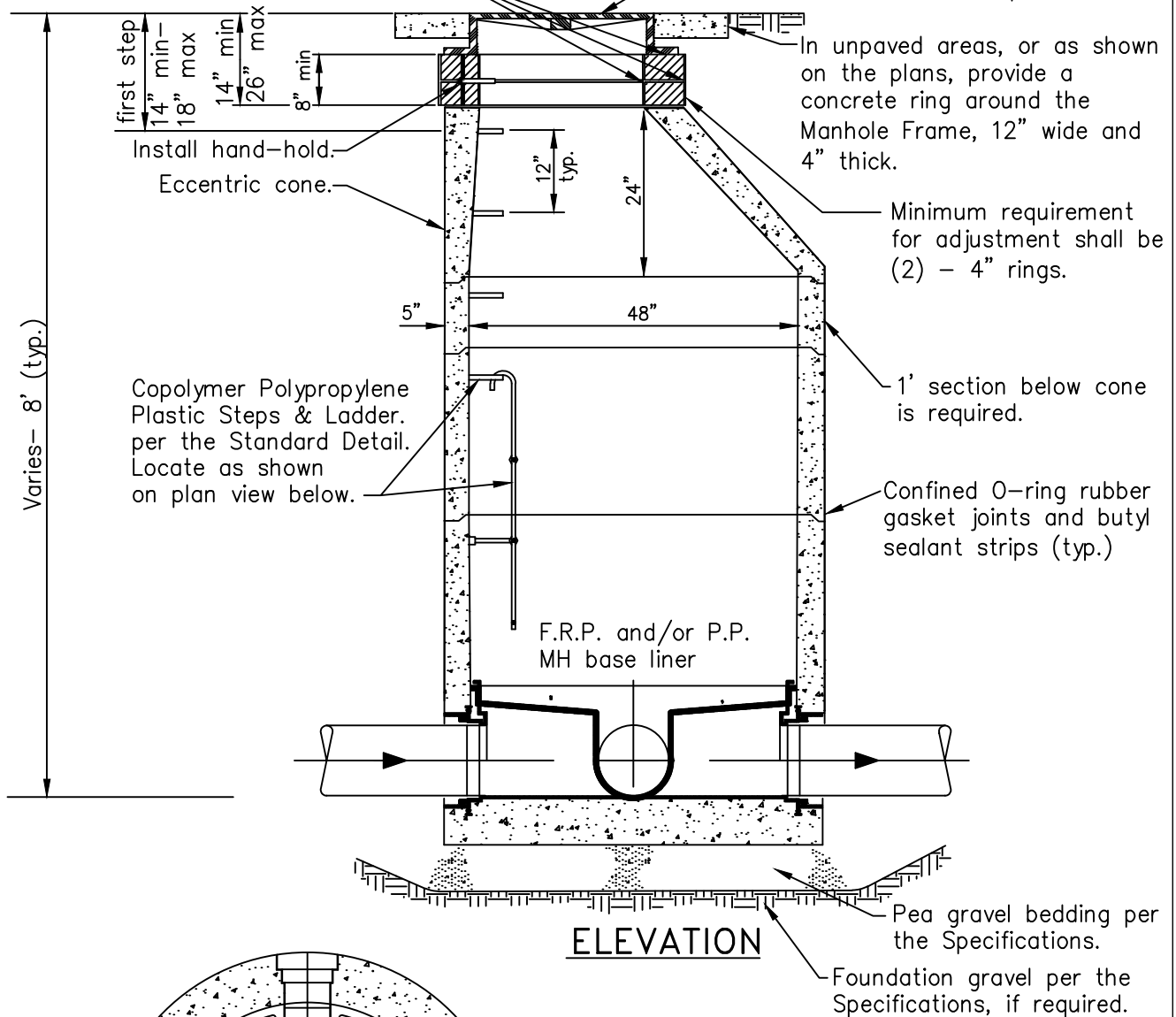


Grout adjusting rings inside, outside and between. Grout under casting.

Manhole Frame and Cover per the Standard Detail. Locate as shown on plan.



Notes:

1. Minimum drop in the invert elevation through the manhole shall be 0.06'.
2. Marker posts may be required in easements.
3. The manhole baseliner shall be a Fiberglass Reinforced Plastic (F.R.P.) and/or Polypropylene (P.P.) Baseliner System per the Engineering Specifications.
4. For manholes less than 5' in depth, see Sewer Standard Detail #3, Shallow Manhole.

PRECAST MANHOLE W/ BASE LINER

NOT TO SCALE

Detail Approvals
 Engineer GSM
 Manager DPK

**NORTHSHORE UTILITY DISTRICT
 STANDARD SEWER DETAILS**

1

February 2014
 S-1(PRECASTMH).dwg