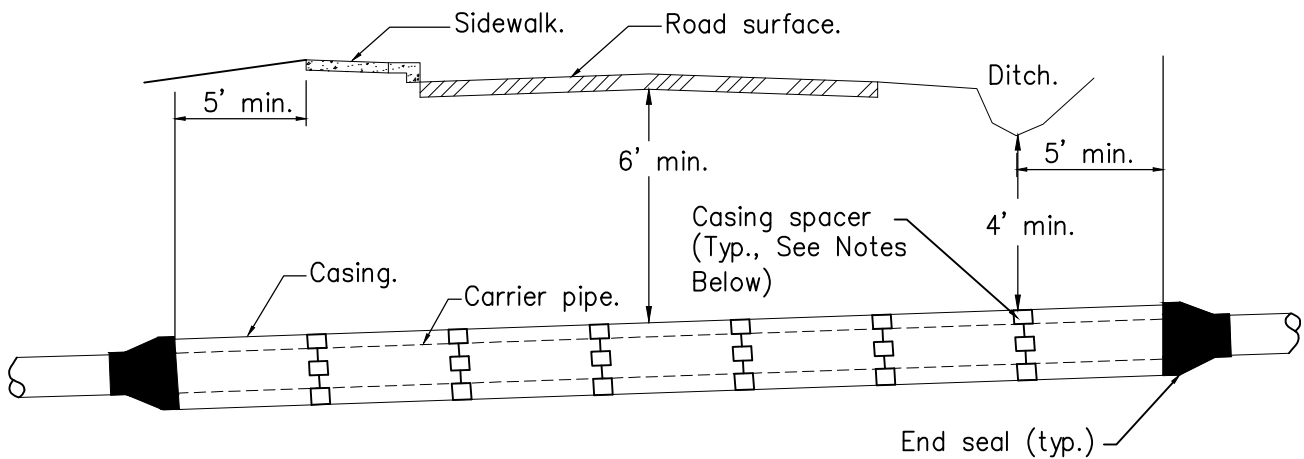


### ROCKERY OR WALL SECTION



### ROADWAY SECTION

Notes:

1. Casing length, type, location and size shall be as shown on the plans or as directed by the District and shall be in accordance with the Specifications.
2. Casing spacers shall include polyethylene runners with stainless steel bands per the Specifications.
3. Casing spacers shall be installed at a maximum 10' spacing, with a spacer located behind each pipe bell and with spacers located within 2' of casing ends.
4. Carrier pipe shall be CL 52 Ductile Iron Restrained Joint pipe unless otherwise specified.

## **CASING PIPE**

NOT TO SCALE

Detail Approvals  
 Engineer GSM  
 Manager DPK

# **NORTHSHORE UTILITY DISTRICT STANDARD SEWER DETAILS**

**10**

February 2014  
 S-10(CASING).dwg