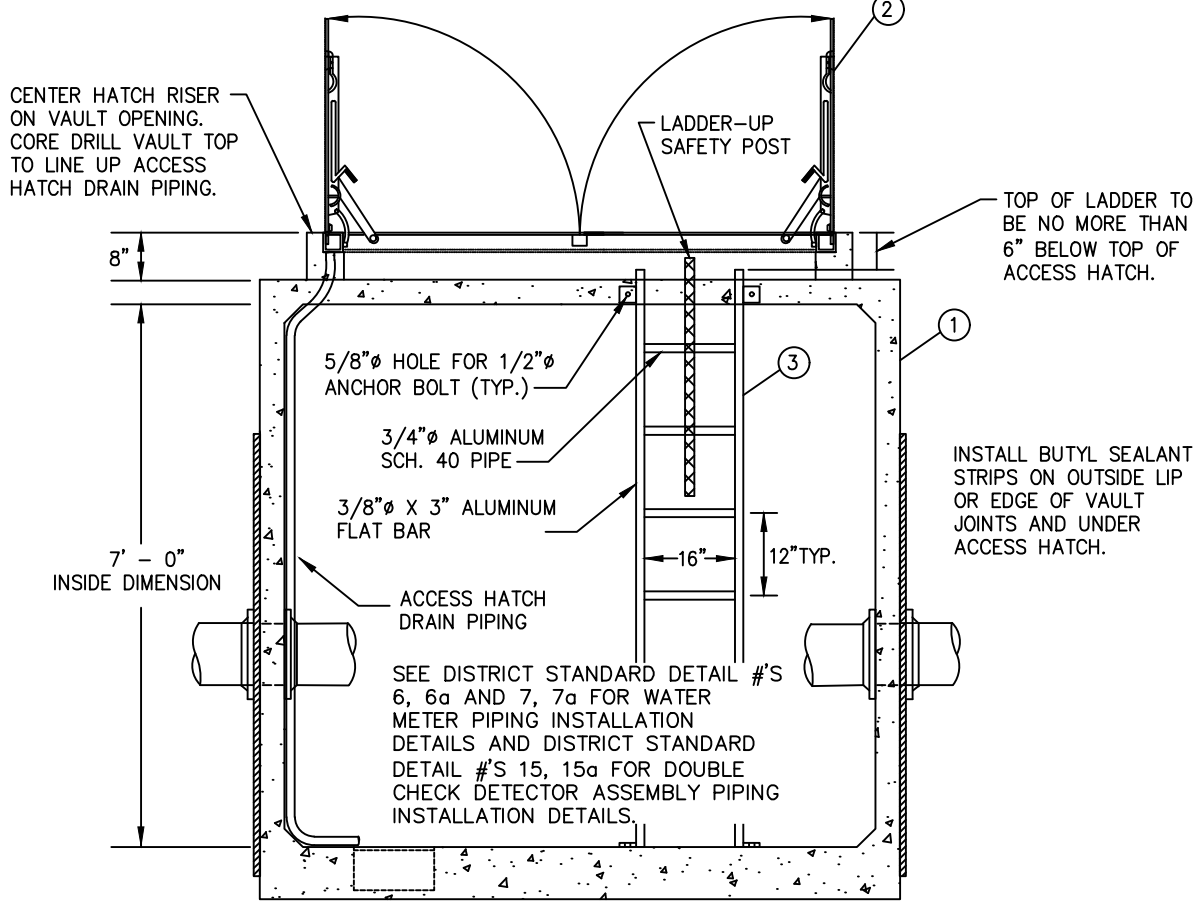


PLAN VIEW
NOT TO SCALE



SECTION A-A
NOT TO SCALE

VAULT DETAIL

NOT TO SCALE

Detail Approvals	
Engineer	GSM
Manager	DPK

**NORTHSHORE UTILITY DISTRICT
STANDARD WATER DETAILS**

MATERIAL LIST:

ITEM	DESCRIPTION
①	<p>PRECAST CONCRETE UNDERGROUND VAULT, 687-LA BY "UTILITY VAULT COMPANY". BASE SECTION: 687-BL WITH FULL-WIDTH SUMP AND GRATE. TOP SECTION: 687 WITH 48" x 72" HATCH OPENINGS LOCATED AS SHOWN TO ACCOMMODATE THE CONCRETE COVER, NO. 57 CLX 42S, AND THE 48" x 72" DOUBLE LEAF HATCH. CORE DRILL CONCRETE TOP SECTION OF VAULT TO ALIGN WITH ACCESS HATCH DRAIN AND INSTALLATION OF 1-1/2" ACCESS HATCH DRAIN PIPING.</p> <p>ALL VAULT WALLS SHALL BE SOLID FULL WIDTH WITH NO KNOCK-OUTS OR CHANNELS. THE VAULT MANUFACTURER SHALL ENSURE THAT NO VAULT JOINTS ARE LOCATED WITHIN 6" OF THE EDGE OF CORE-DRILLED PENETRATIONS. SEE NOTES BELOW.</p> <p>INSTALL BUTYL SEALANT STRIPS BETWEEN VAULT SECTIONS AND UNDER ACCESS HATCH PER MANUFACTURER'S RECOMMENDATIONS AND ENSURE THAT SEALANT IS NOT SQUEEZED INTO VAULT.</p> <p>PAINTING: CONCRETE TO DRY FOR 9 DAYS PRIOR TO COATING APPLICATION. SURFACE IS TO BE CLEAN, DRY AND FREE OF CONTAMINANTS.</p> <p>THE INTERIOR OF THE CONCRETE VAULT SHALL BE PAINTED AT THE VAULT MANUFACTURER WITH ONE COAT OF TNE MEC SERIES N69 HI-BUILD EPOXOLINE II, APPLIED AT 6-8 MILS DFT, COLOR TO BE WHITE.</p> <p>EXTERIOR BELOW GRADE OF THE CONCRETE VAULT SHALL BE PAINTED WITH ONE COAT TNE MEC SERIES 46H-413 HI-BUILD TNE ME-TAR COAL TAR EPOXY, APPLIED AT 16 TO 20 MILS DFT.</p> <p>TO FIELD REPAIR ANY DAMAGED COATING, CONTRACTOR SHALL LIGHTLY SAND SURFACE WITH 150 GRIT SAND PAPER TO DEGLOSS AREA TO BE RE-COATED. REAPPLY PAINT PER THE DATA SHEET FOR THE SPECIFIED MATERIAL.</p>
②	<p>ACCESS HATCH: "UTILITY VAULT" CONCRETE COVER NO. 57 CLX 42S WITH "LW PRODUCTS" 48" X 72" DOUBLE LEAF HATCH, H-20. PROVIDE 1-1/2" SCH. 80 CONDUIT FROM HATCH GUTTER TO VAULT SUMP SECURED TO VAULT WALL WITH APPROVED FASTENERS AT 3' SPACING.</p>
③	<p>ALUMINUM LADDER BOLTED TO VAULT BASE AND HATCH RISER WITH SS HARDWARE. LADDER TO INCLUDE BILCO "LADDER-UP" SAFETY POST.</p>

NOTES:

1. PROVIDE SHOP DRAWINGS AND SUBMITTALS FOR ALL MATERIALS TO THE DISTRICT FOR REVIEW AND APPROVAL PRIOR TO CONSTRUCTION.
2. VAULTS FOR WATER METERS AND DOUBLE CHECK DETECTOR ASSEMBLIES 10" AND LARGER WILL BE DETERMINED BY THE DISTRICT AT THE TIME OF PLAN REVIEW.
3. PIPE AND CONDUIT PENETRATIONS SHALL BE CORE-DRILLED ON-SITE AND SHALL BE SEALED WATERTIGHT. PROVIDE "LINK-SEAL" FITTINGS AT ALL PENETRATIONS.
4. SEE DISTRICT STANDARD DETAIL #'S 6, 6a AND 7, 7a FOR WATER METER PIPING INSTALLATION DETAILS AND DISTRICT STANDARD DETAIL #'S 15, 15a FOR DOUBLE CHECK DETECTOR ASSEMBLY PIPING INSTALLATION DETAILS.

VAULT DETAIL

NOT TO SCALE

Detail Approvals
 Engineer GSM
 Manager DPK

**NORTHSHORE UTILITY DISTRICT
 STANDARD WATER DETAILS**