

**ADDENDUM 3
TO THE CONTRACT PROVISIONS AND CONTRACT PLANS**

FOR

**NORTHSHORE UTILITY DISTRICT
CONTRACT NO. C0928 451 CONTROL VALVE FACILITY AND CONTROL
VALVE VAULT**

G&O #18591.00

ISSUED THIS DATE: WEDNESDAY, SEPTEMBER 25, 2024

**REVISED BID SUBMITTAL: 10:00 A.M. (LOCAL TIME) ON
TUESDAY, OCTOBER 1, 2024
NORTHSHORE UTILITY DISTRICT
6830 NE 185TH STREET
KENMORE, WASHINGTON 98028**



9/25/2024

Bidder shall acknowledge receipt of this Addendum on Page Prop 5R of the Proposal.

TO PROSPECTIVE BIDDERS:

The attention of all prospective bidders on the above project is directed to the following additions and modifications to the Contract Provisions and Contract Plans.

I. ADDITIONS, MODIFICATIONS, AND/OR DELETIONS TO THE MEASUREMENT AND PAYMENT

ITEM 1:

Page MP-12R (Addendum 2), Measurement and Payment Schedule A, General Restoration

ADD the following:

- “11. Replacement of existing manhole castings and covers, and existing valve cans and lids as identified on the plans and are not associated with and paid for as new valves or manholes.”

II. ADDITIONS, MODIFICATIONS, AND/OR DELETIONS TO THE TECHNICAL SPECIFICATIONS

ITEM 1:

Page 02740-6, Specification Section 02740-3.11, ADJUSTING STRUCTURES TO GRADE

DELETE this section in its entirety and **REPLACE** with the following:

“3.11 ADJUSTING STRUCTURES TO GRADE

This work consists of constructing and/or adjusting all new and existing utility structures encountered on the project to finished grade.

For asphalt overlay areas called for to be planed, all existing utility covers shall be lowered below the proposed planing depth prior to planing.

The castings shall not be adjusted to final grade until the pavement is completed, at which time the center of each casting shall be relocated from references previously established by the Contractor. The pavement shall be cut as further described and base material removed to permit removal of the casting. The casting shall then be brought to proper grade.

Prior to commencing manhole adjustments, a plywood and visqueen cover, as approved by the District, shall be placed over the manhole base and channel to protect them from debris.

The hot mix asphalt pavement shall be cut and removed to a neat circle, the diameter of which shall not exceed 6-inch from the outside diameter of the casting frame. The casting frame shall be brought up to desired grade, which shall conform to surrounding road surface. For manholes, adjustment to desired grade shall be made with the use of concrete adjustment rings or bricks. No iron adjustment rings will be allowed. An approved class of mortar (one-part cement to two-parts of plaster sand) shall be placed between adjustment rings or bricks and casting frame to completely fill all voids and to provide a watertight seal. No rough or uneven surfaces will be permitted inside or out. Adjustment rings or brick shall be placed and aligned so as to provide vertical sides and vertical alignment of ladder steps (if steps are necessary).

Check manhole specifications and the Standard Details for minimum and maximum manhole adjustment and step requirements. Special care shall be exercised in all operations in order not to damage the manhole, frames and lids or other existing facilities.

The annular space between the casting and the pavement shall be filled with crushed rock and compacted with hand tamper to within 6-inch of the top of the frame. Asphalt concrete patching shall not be carried out during wet ground conditions or when air temperature is below 50°F. Hot mix asphalt must be at the temperature as specified by the regulatory agency when placed. Before making the hot mix asphalt repair, the edges of the existing hot mix asphalt pavement and the outer edge of the casting shall be tack coated with hot asphalt cement. The remaining 6-inch shall then be filled with HMA and compacted with hand tampers and a patching roller.

The completed patch shall match the existing paved surface for texture, density, and uniformity of grade. The joint between the patch and the existing pavement shall then be carefully painted with hot asphalt cement or asphalt emulsion and shall be immediately covered with dry paving sand before asphalt cement solidifies. Before acceptance of a job, castings shall be cleaned of all debris and foreign material. All ladders must be cleaned free of grout. Any damage occurring to the existing facilities due to the Contractor's operations shall be repaired at its own expense."

III. ADDITIONS, MODIFICATIONS, AND/OR DELETIONS TO THE CONTRACT PLANS

ITEM 1:

SHEET C1-4, SCHEDULE A - PROPOSED SITE AND PIPING PLAN

DELETE Sheet C1-4 in its entirety and **REPLACE** with the attached revised Sheet C1-4.

ITEM 2:

SHEET C1-7, SCHEDULE A - PROPOSED PIPE PROFILES

DELETE Sheet C1-7 in its entirety and **REPLACE** with the attached revised Sheet C1-7.

ITEM 3:

SHEET C1-8, SCHEDULE A – PROPOSED SEWER AND STORM DRAIN PROFILE

DELETE the words “12” DI CLASS 53” and **REPLACE** with the following:

“12” CPEP”

ITEM 4:

SHEET CD-3, SCHEDULE A – CIVIL DETAILS 3

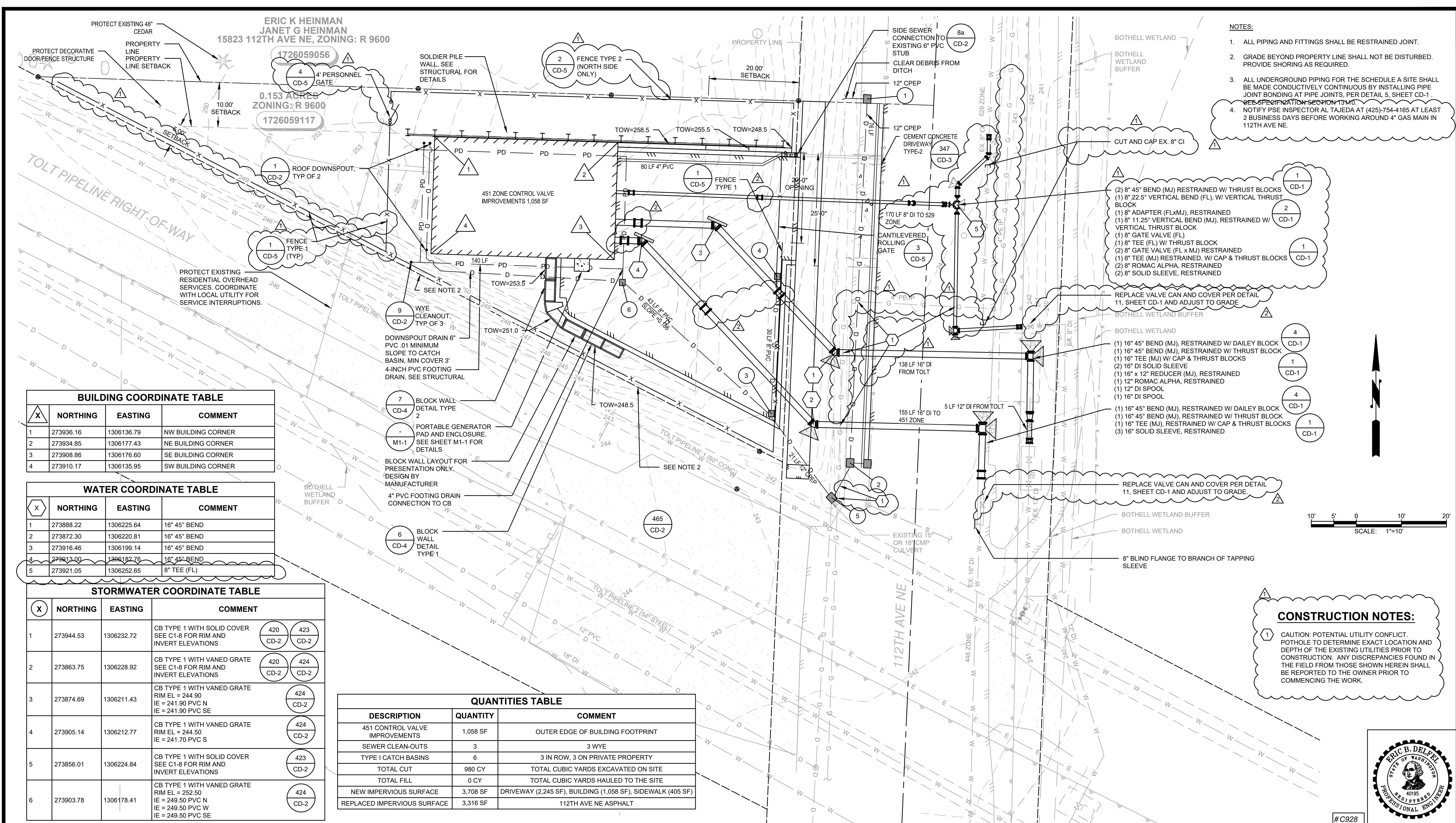
DELETE Sheet CD-3 in its entirety and **REPLACE** with the attached revised Sheet CD-3.

IV. PRE-BID MEETING

ITEM 1:

Attached, for informational purposes only, is the sign in sheet for the Pre-Bid Meeting, which has some contact information corrected from Addendum 2.

M:\Northshore\451 Zone Control Valve Station\PlanSet\Mar-2022\General\IP-SITE SCH A.dwg, 9/23/2024, 10:26 AM, PATRICK SMILEY



- NOTES:**
- ALL PIPING AND FITTINGS SHALL BE RESTRAINED JOINT.
 - GRADE BEYOND PROPERTY LINE SHALL NOT BE DISTURBED. PROVIDE SHORING AS REQUIRED.
 - ALL UNDERGROUND PIPING FOR THE SCHEDULE A SITE SHALL BE MADE CONDUCTIVELY CONTINUOUS BY INSTALLING PIPE JOINT BONDING AT PIPE JOINTS, PER DETAIL 5, SHEET CD-1. SEE SPECIFICATION SECTION 13.40.
 - NOTIFY PSE INSPECTOR AL TAJEDA AT (425)-754-4165 AT LEAST 2 BUSINESS DAYS BEFORE WORKING AROUND 4\"/>

- (2) 8\"/>

- REPLACE VALVE CAN AND COVER PER DETAIL 11, SHEET CD-1 AND ADJUST TO GRADE.
- BOTHELL WETLAND BUFFER
- BOTHELL WETLAND
- (1) 16\"/>

CONSTRUCTION NOTES:

1 CAUTION: POTENTIAL UTILITY CONFLICT. POTHOLE TO DETERMINE EXACT LOCATION AND DEPTH OF THE EXISTING UTILITIES PRIOR TO CONSTRUCTION. ANY DISCREPANCIES FOUND IN THE FIELD FROM THOSE SHOWN HEREIN SHALL BE REPORTED TO THE OWNER PRIOR TO COMMENCING THE WORK.

BUILDING COORDINATE TABLE

X	NORTHING	EASTING	COMMENT
1	273936.16	1306136.79	NW BUILDING CORNER
2	273934.85	1306177.43	NE BUILDING CORNER
3	273908.86	1306176.60	SE BUILDING CORNER
4	273910.17	1306135.95	SW BUILDING CORNER

WATER COORDINATE TABLE

X	NORTHING	EASTING	COMMENT
1	273888.22	1306225.64	16\"/>
2	273872.30	1306220.81	16\"/>
3	273916.46	1306199.14	16\"/>
4	273913.00	1306182.76	16\"/>
5	273921.05	1306252.65	8\"/>

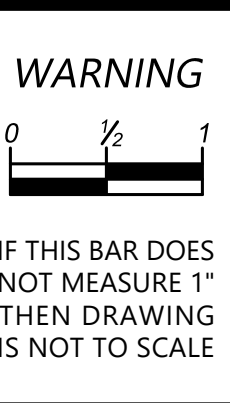
STORMWATER COORDINATE TABLE

X	NORTHING	EASTING	COMMENT
1	273944.53	1306232.72	CB TYPE 1 WITH SOLID COVER SEE C1-8 FOR RIM AND INVERT ELEVATIONS (420 CD-2) (423 CD-2)
2	273863.75	1306228.92	CB TYPE 1 WITH VANED GRATE SEE C1-8 FOR RIM AND INVERT ELEVATIONS (420 CD-2) (424 CD-2)
3	273874.69	1306211.43	CB TYPE 1 WITH VANED GRATE RIM EL = 244.90 IE = 241.90 PVC N IE = 241.90 PVC SE (424 CD-2)
4	273905.14	1306212.77	CB TYPE 1 WITH VANED GRATE RIM EL = 244.50 IE = 241.70 PVC S (424 CD-2)
5	273856.01	1306224.84	CB TYPE 1 WITH SOLID COVER SEE C1-8 FOR RIM AND INVERT ELEVATIONS (423 CD-2)
6	273903.78	1306178.41	CB TYPE 1 WITH VANED GRATE RIM EL = 252.50 IE = 249.50 PVC N IE = 249.50 PVC W IE = 249.50 PVC SE (424 CD-2)

QUANTITIES TABLE

DESCRIPTION	QUANTITY	COMMENT
451 CONTROL VALVE IMPROVEMENTS	1,058 SF	OUTER EDGE OF BUILDING FOOTPRINT
SEWER CLEAN-OUTS	3	3 WYE
TYPE I CATCH BASINS	6	3 IN ROW, 3 ON PRIVATE PROPERTY
TOTAL CUT	980 CY	TOTAL CUBIC YARDS EXCAVATED ON SITE
TOTAL FILL	0 CY	TOTAL CUBIC YARDS HAULED TO THE SITE
NEW IMPERVIOUS SURFACE	3,708 SF	DRIVEWAY (2,245 SF), BUILDING (1,058 SF), SIDEWALK (405 SF)
REPLACED IMPERVIOUS SURFACE	3,316 SF	112TH AVE NE ASPHALT

NO	BY	APPD	REVISION	DATE
1	PLS	EBD	ADDENDUM 2	8/28/24
2	PLS	EBD	ADDENDUM 3	9/18/24



DESIGNED BY: AKG
 DRAWN BY: MAN
 CHECKED BY: AKG
 APPROVAL: EBD
 DATE: AUG 2024

NORTHSHORE UTILITY DISTRICT
 6830 NE 185th St. P.O. Box 82489
 Kenmore, WA 98028-2684 Kenmore, WA 98028-2684
 Ph: (425) 398-4400 | Fax: (425) 398-4430 | www.nud.net

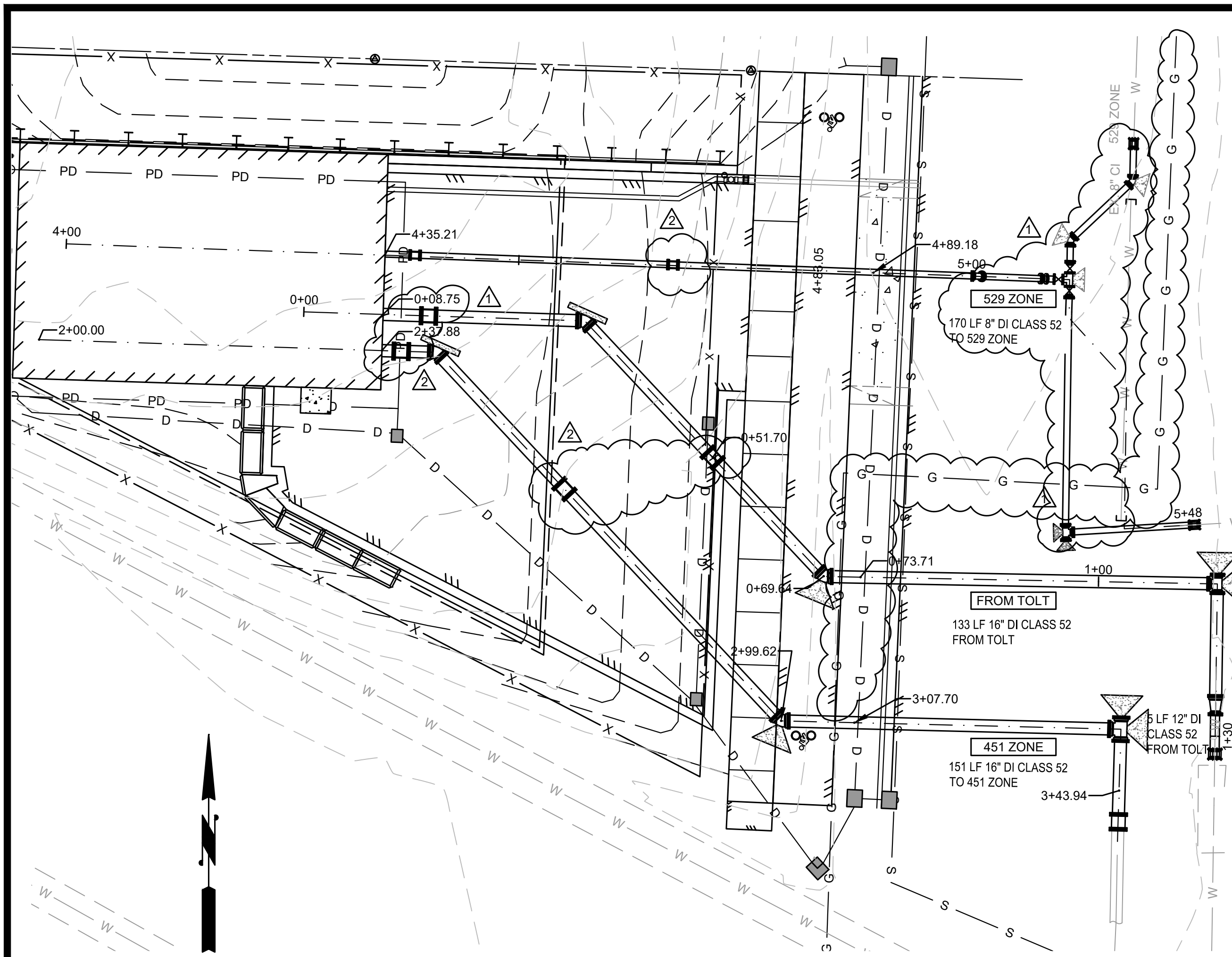
C0928
451 ZONE CONTROL VALVE IMPROVEMENTS
SCHEDULE A
PROPOSED SITE AND PIPING PLAN

CIVIL
 SHEET: C1-4
 8 OF 56

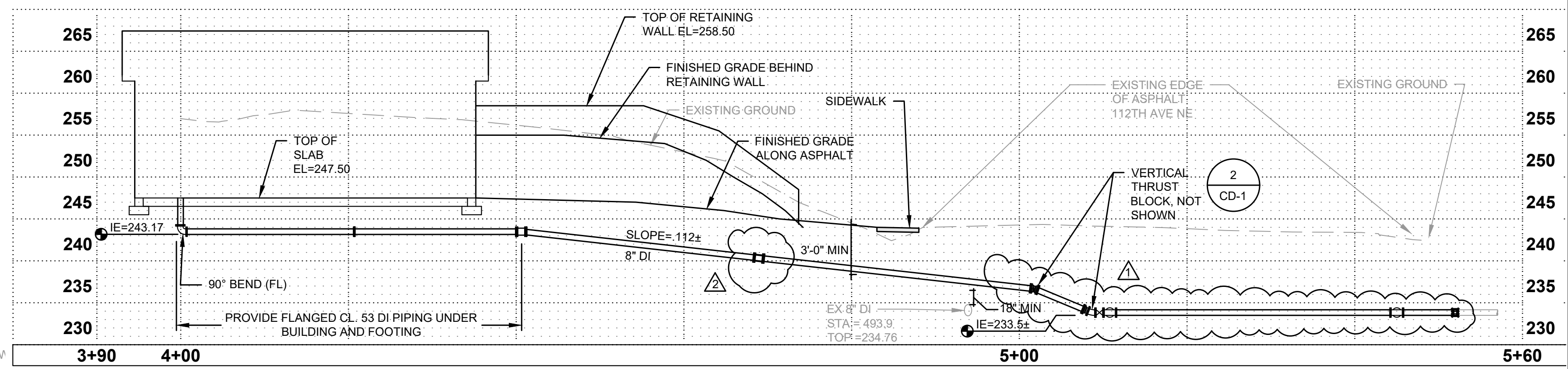


#C928

M:\Northshore\16591-451 Zone Control Valve Station\PlanSet-Mar-2022\General\IC-PROFILES.dwg, 9/18/2024 5:50 PM, PATRICK SMILEY

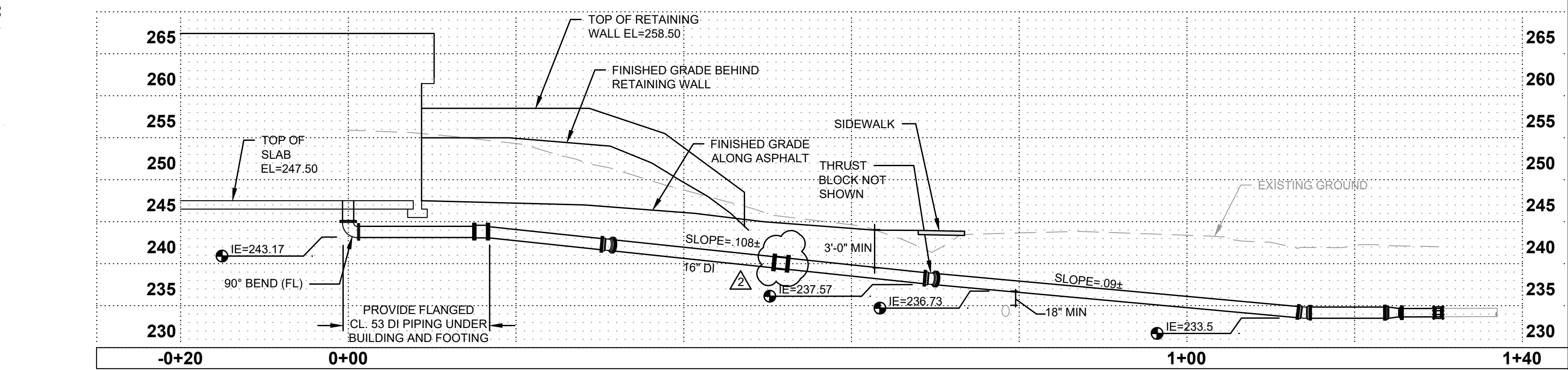


TO 529 CENTERLINE PROFILE
SCALE: 1" = 10' HORIZONTAL
1" = 10' VERTICAL



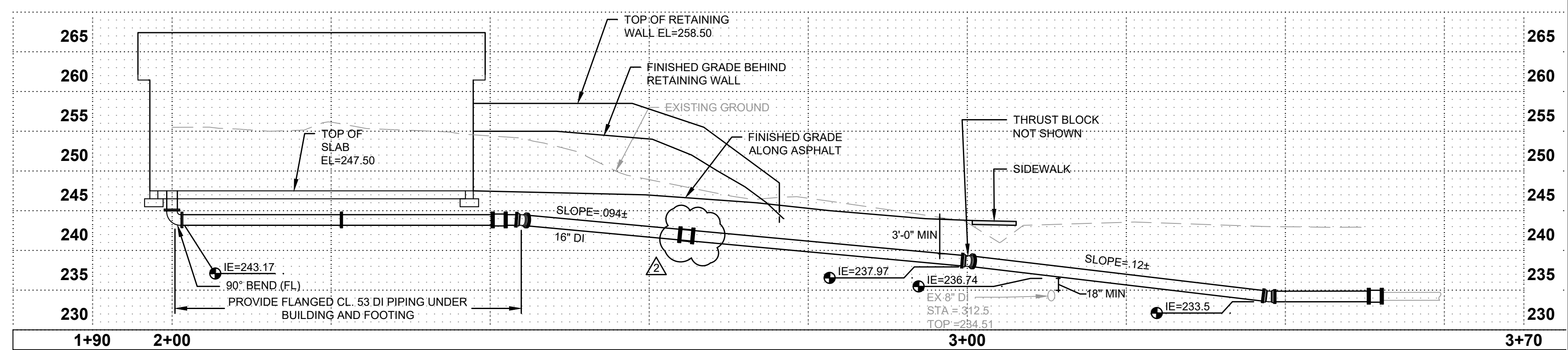
529 ZONE

FROM TOLT CENTERLINE PROFILE
SCALE: 1" = 10' HORIZONTAL
1" = 10' VERTICAL

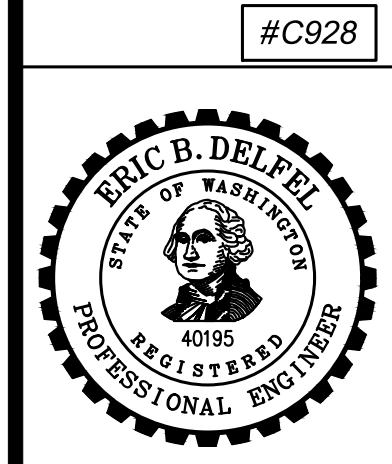
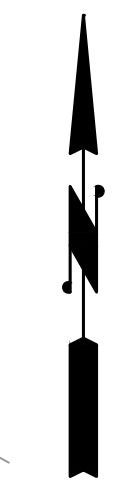
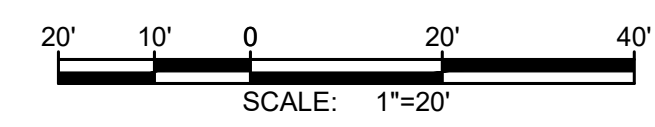


FROM TOLT

TO 451 CENTERLINE PROFILE
SCALE: 1" = 10' HORIZONTAL
1" = 10' VERTICAL



451 ZONE

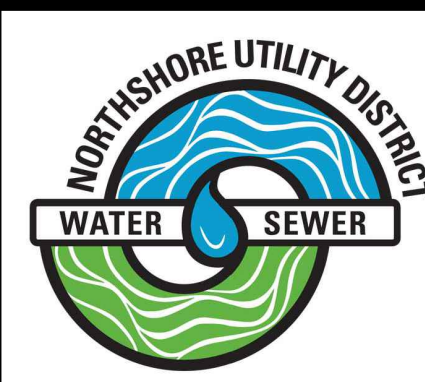


NO	BY	APPD	REVISION	DATE
1	PLS	EBD	ADDENDUM 2	8/28/24
2	PLS	EBD	ADDENDUM 3	9/18/24

WARNING
IF THIS BAR DOES NOT MEASURE 1" THEN DRAWING IS NOT TO SCALE



DESIGNED BY	AKG
DRAWN BY	MAN
CHECKED BY	AKG
APPROVAL	EBD
DATE	AUG 2024



NORTHSHORE UTILITY DISTRICT
6830 NE 185th St. P.O. Box 82489
Kenmore, WA 98028-2684 Kenmore, WA 98028-2684
Ph: (425) 398-4400 | Fax: (425) 398-4430 | www.nud.net

C0928
451 ZONE CONTROL VALVE IMPROVEMENTS
SCHEDULE A
PROPOSED PIPE PROFILES

CIVIL
SHEET: C1-7
11 OF 56

V:\GIS\SERVER\3\data\2\North\18591_451_zone_control_valve_station\plans\set-mar-2022\General\CD-DET.dwg, 9/23/2024, 10:45 AM, PATRICK SMILEY

NOTES:

- BOULEVARD TURN LANE OR PHASED MEDIAN
- SCAPE ELEMENTS MAY BE REQUIRED (TYPICAL)
- SEE DETAIL 340 FOR PROPOSED ULTIMATE UTILITY NETWORK FOR BIKEWAY FACILITY REQUIREMENTS
- SEE DETAIL 340 FOR PROPOSED ULTIMATE UTILITY NETWORK FOR BIKEWAY FACILITY REQUIREMENTS
- SEE DETAIL 340 FOR PROPOSED ULTIMATE UTILITY NETWORK FOR BIKEWAY FACILITY REQUIREMENTS
- SEE DETAIL 340 FOR PROPOSED ULTIMATE UTILITY NETWORK FOR BIKEWAY FACILITY REQUIREMENTS
- SEE DETAIL 340 FOR PROPOSED ULTIMATE UTILITY NETWORK FOR BIKEWAY FACILITY REQUIREMENTS
- SEE DETAIL 340 FOR PROPOSED ULTIMATE UTILITY NETWORK FOR BIKEWAY FACILITY REQUIREMENTS
- SEE DETAIL 340 FOR PROPOSED ULTIMATE UTILITY NETWORK FOR BIKEWAY FACILITY REQUIREMENTS
- SEE DETAIL 340 FOR PROPOSED ULTIMATE UTILITY NETWORK FOR BIKEWAY FACILITY REQUIREMENTS
- SEE DETAIL 340 FOR PROPOSED ULTIMATE UTILITY NETWORK FOR BIKEWAY FACILITY REQUIREMENTS
- SEE DETAIL 340 FOR PROPOSED ULTIMATE UTILITY NETWORK FOR BIKEWAY FACILITY REQUIREMENTS
- SEE DETAIL 340 FOR PROPOSED ULTIMATE UTILITY NETWORK FOR BIKEWAY FACILITY REQUIREMENTS
- SEE DETAIL 340 FOR PROPOSED ULTIMATE UTILITY NETWORK FOR BIKEWAY FACILITY REQUIREMENTS
- SEE DETAIL 340 FOR PROPOSED ULTIMATE UTILITY NETWORK FOR BIKEWAY FACILITY REQUIREMENTS

STANDARD PAVEMENT SECTION
LEFT SIDE (RIGHT SIDE TO BE MIRROR IMAGED)

City of Bothell
PUBLIC WORKS DEPARTMENT

Approved By: [Signature]
City Engineer

TYPICAL ARTERIAL SECTION WITH PROTECTED BIKE LANES

Standard Detail **306**
Revision Date: Apr, 2023

City of Bothell
PUBLIC WORKS DEPARTMENT

Approved By: [Signature]
City Engineer

PAVEMENT PLANNING

Standard Detail **318**
Revision Date: Feb, 2012

City of Bothell
PUBLIC WORKS DEPARTMENT

Approved By: [Signature]
City Engineer

CONCRETE SIDEWALK DETAIL

Standard Detail **344**
Revision Date: Dec, 2016

City of Bothell
PUBLIC WORKS DEPARTMENT

Approved By: [Signature]
City Engineer

CEMENT CONCRETE DRIVEWAY TYPE - 2

Standard Detail **347**
Revision Date: Jun, 2015

NOTES:

- IF THE DISTANCE FROM THE EDGE OF PATCH TO THE EDGE OF PAVEMENT OR CURB AND GUTTER IS LESS THAN 3", THE PATCH MUST CONTINUE TO THE EXISTING EDGE; UNLESS ROADWAY IS OVERLAID WITHIN 60 DAYS.
- HOT MIX ASPHALT SHALL BE CLASS 1/2".
- ALL TRENCH BACKFILL SHALL BE CRUSHED SURFACING TOP COURSE MATERIAL FOR PERPENDICULAR TRENCHES, OR AS DIRECTED BY ENGINEER.
- HMA CLASS 1/2" MAY BE USED IN LIEU OF ATB.
- PATCH MUST ALWAYS BE 1" DEEPER THAN EXISTING ASPHALT; MAX 6" DEEP, OR AS DIRECTED BY ENGINEER.
- TOP SEAL-USE PG 64-22 AND PROVIDE A SAND BLANKET TO ALLEVIATE TRAILING.
- REFER TO CDK STD. PLAN NO. CK-R-13C FOR REQUIREMENTS FOR GEOTECH BORING ASPHALT PATCHES.

CITY OF KIRKLAND
PLAN NO. CK-R-12

RESTORATION DETAIL AND PAVEMENT PATCHING

Standard Detail **340**
Revision Date: Feb, 2012

City of Bothell
PUBLIC WORKS DEPARTMENT

Approved By: [Signature]
City Engineer

CEMENT CONCRETE CURBS

Standard Detail **340**
Revision Date: Feb, 2012

MANHOLE LOCKING FRAME AND COVER
NOT TO SCALE

NOTE:

- MANHOLE FRAME AND COVER SHALL BE EAST JORDAN IRON WORKS EROO ASSEMBLY, PART NUMBER 001040105L01.
- FOR PRIVATE MANHOLES, FRAME AND COVER SHALL BE EAST JORDAN IRON WORKS EROO ASSEMBLY, PART NUMBER 00104043L01. MANHOLE LID TO SAY "SEWER". MANHOLE LID NOT TO INCLUDE HUD LOGO OR NAME.

DETAIL APPROVALS
EDITOR: T/M/C
MANAGER: S/J/Z

NORTHSHORE UTILITY DISTRICT
2024 STANDARD SEWER DETAILS

Standard Detail **5**
Revision Date: [Blank]

NO	BY	APPD	REVISION	DATE
1	PLS	EBD	ADDENDUM 3	9/18/24

WARNING

IF THIS BAR DOES NOT MEASURE 1" THEN DRAWING IS NOT TO SCALE

DESIGNED BY AKG
DRAWN BY MAN
CHECKED BY AKG
APPROVAL EBD
DATE AUG 2024

Gray & Osborne, Inc.
CONSULTING ENGINEERS

NORTHSHORE UTILITY DISTRICT
6830 NE 185th St. P.O. Box 82489
Kenmore, WA 98028-2684 Kenmore, WA 98028-2684
Ph: (425) 398-4400 | Fax: (425) 398-4430 | www.nud.net

C0928
451 ZONE CONTROL VALVE IMPROVEMENTS
SCHEDULES A AND B
CIVIL DETAILS 3

CIVIL
SHEET:CD-3
21 OF 56



#C928

**NORTHSHORE UTILITY DISTRICT
451 ZONE CONTROL VALVE FACILITY AND CONTROL VALVE VAULT
G&O #18591.00
PREBID MEETING SIGN IN SHEET – 8/26/2024 – 10:00 A.M.**

	Name	Company	Address/Email	Phone
1.	Joe Reed	KBA	Jreed@KBACM.com	
2.	Scott Wilcox	KBA	Swilcox@KBACM.com	425-866-3202
3.	Brain Menard	Road Construction Northwest	Bids@rcnw.com	425-531-1634
4.	David Bloen	McClure & Sons	Bids@Mcclureandsons.com	425-316-6999
5.	Brian Barry	JW Folwer	Brianb@Jwfowler.com	253-288-8135
6.	Levi Wallace	Interwest	Bids@Interwest.biz	360-391-0768
7.	Anthony Thomas	Anvil Builders	Athomas@Anvilbuilders.com	206-359-0132
8.	Chris Stok	HPC	Chriss@HarborPacific.com	206-491-9913
9.	George Matote	NUD	Gmatote@nud.net	425-471-9450
10.	Mike Pellittori	Pellco	Mikep@Pellcoconstruction.com Bids@pellecoconstruction.com	425-265-7211

ADDENDUM 3

	Name	Company	Address/Email	Phone
11.	Eric Delfel	G&O	edelfel@g-o.com	206-284-0860
12.	Patrick Smiley	G&O	psmiley@g-o.com	206-284-0860
13.	Catherine Forrest	NUD	Cforrest@NUD.net	425-398-4400
14.				
15.				
16.				
17.				
18.				
19.				
20.				